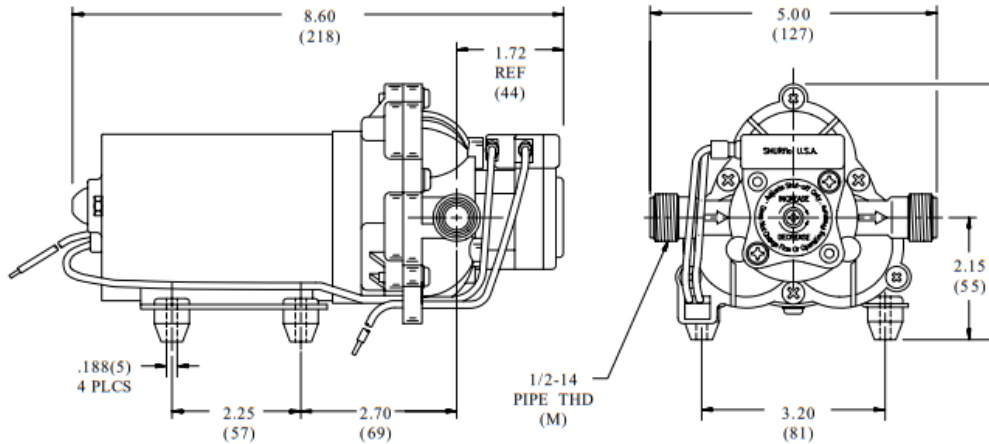


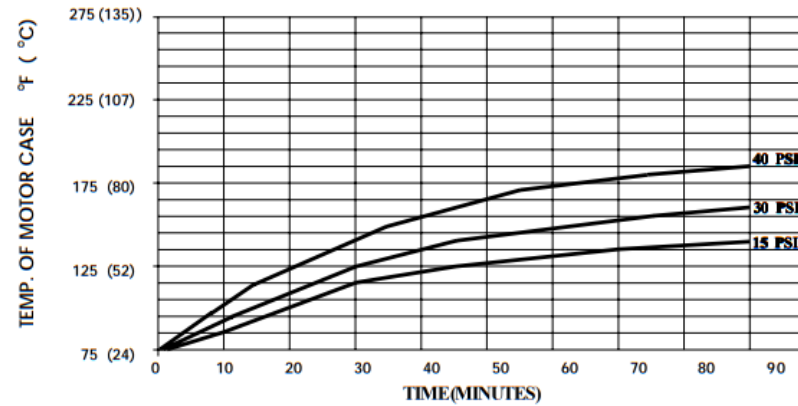
**SPECIFICATIONS:**

- MODEL NUMBER:** 2088-443-144
- PUMP DESIGN:** Positive Displacement 3 Chamber Diaphragm Pump
- CHECK VALVE:** (1-Way Operation) Prevents Reverse Flow
- CAM:** 3.0 Degree
- MOTOR:** Permanent Magnet, P/N 11-111-00
- VOLTAGE:** 12 VDC Nominal
- PRESSURE SWITCH:** Factory Set @ 45 PSI Shut-Off, Turn On 25± 5 PSI  
Adjustable From 30 to 50 PSI
- LIQUID TEMPERATURE:** 130 Degrees Fahrenheit (54 Degrees Centigrade) Max.
- PRIME:** Self-Priming Up To 9 Ft. Vertical,  
Max. Inlet Pressure 30 PSI (2.1 Bar)
- PORTS:** 1/2" - 14 Male Parallel Thread
- MATERIAL OF CONSTRUCTION:**
  - PLASTICS- Polypropylene
  - VALVES- Santoprene
  - DIAPHRAGM- Santoprene
  - FASTENERS- Zinc Plated Steel
- NET WEIGHT:** 4.8 Lbs (2.18 Kg)
- DUTY CYCLE:** intermittent (See Temperature Rise Chart)
- TYPICAL APPLICATIONS:** Water Delivery

**DIMENSIONS:**

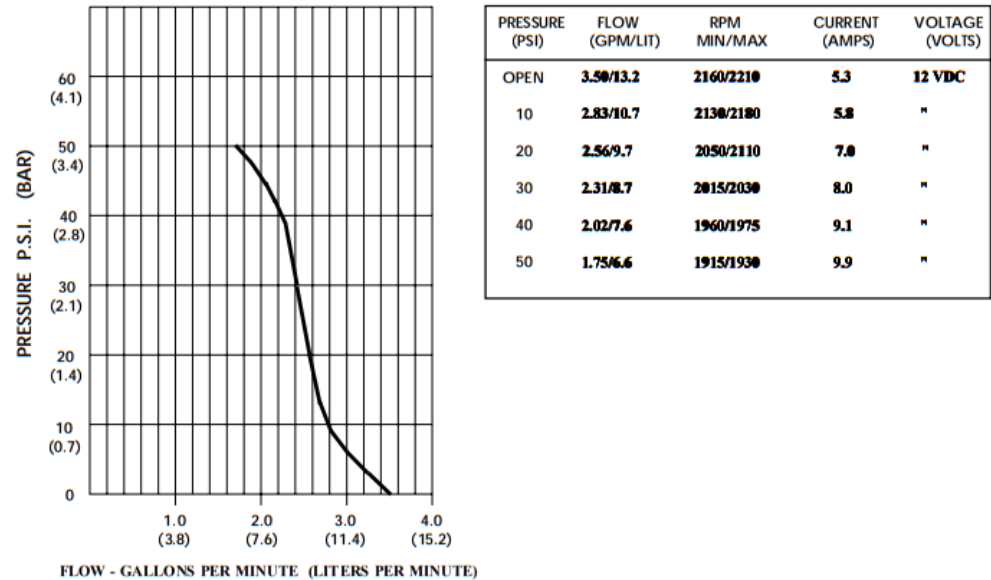


**TEMPERATURE RISE**



THIS GRAPH IS FOR USE AS A DESIGN GUIDE. IT IS BASED ON RUNNING CONTINUOUSLY WITH AN AMBIENT TEMPERATURE OF 75° F IN STILL AIR.

**TYPICAL PERFORMANCE**



-SPECIFICATIONS SUBJECT TO CHANGE WITHOUT NOTICE.