



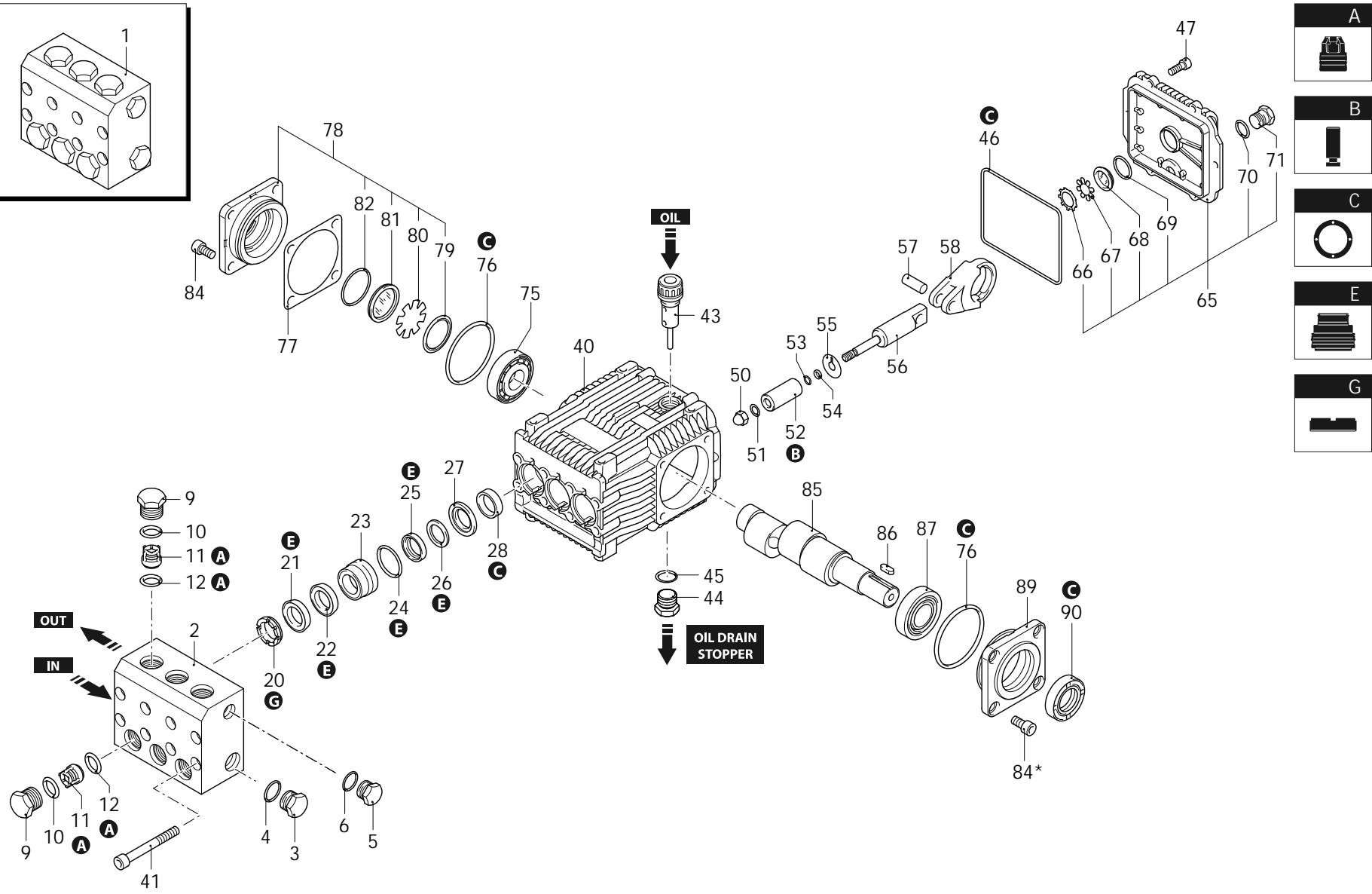
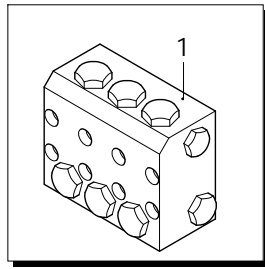
Series Stainless Steel

RK-SS

N

1450rpm

ø 24mm



AR_sStainless_Steel-05_ø22

31/05/2024



Series Stainless Steel

RK-SS

N

1450rpm

Ø 24mm

P	Code	Description	Q	Assembly prescription	Validity	P	Code	Description	Q	Assembly prescription	Validity
1	2349205	Head assembly	1	Ø 22 stainless steel		68	1260250	Level gauge	1		
2	2340340	Head	1	stainless steel	C=20Nm	69	1140450	O-ring	1	Ø 20,24x2,62	Lubricate with grease Molykote PG54
3	2340360	Plug	1	1/2" G	C=30Nm	70	740290	O-ring	1	Ø 14x1,78	Lubricate with grease Molykote PG54
4	180102	O-ring	1	Ø 17,5x2 Viton		71	2340350	Plug	1	3/8" G	C=20Nm
5	2340350	Plug	1	3/8" G	C=20Nm	75	2280340	Bearing	1		
6	740291	O-ring	1	Ø 14x1,78 Viton		76	640030	O-ring	2	Ø 59,99x2,62	
9	2340030	Plug	6		C=54Nm / Loxeal 55-14	77	1380120	Shim 0.10mm	1		
10	960161	O-ring	6	Ø 17,86x2,62 Viton		77	1380130	Shim 0.19mm	1		
11	2349050	Complete valve	6			77	1380530	Shim 0.25mm	1		
12	880831	O-ring	6	Ø 15,54x2,62 Viton		78	2349011	Cover	1		
20	840320	Ring	3	support Ø 22		79	1941290	Ring	1		
21	840331	Water seal	3	Ø 22	Lubricate with grease Molykote PG54	80	1941260	Plate	1		
22	2340330	Ring	3	anti-extrusion		81	1941270	Level gauge	1		
23	2340420	Piston guide	3	Ø 22	Lubricate with grease Molykote PG54	82	100410	O-ring	1	Ø 34,6x2,62	
24	961241	O-ring	3	Ø 31,47x1,78 Viton		84	2340240	Screw	4	TCEI M8x16	C=20Nm / Loxeal 55-14
25	2340410	Gasket	3	Ø 22	Lubricate with grease Molykote PG54	84*	2340240	Screw	4	TCEI M8x16	C=20Nm / Loxeal 55-14
26	2340400	Ring	3	anti-extrusion		85	2280070	Shaft	1	2 marked	
27	2340430	Spacer	3	Ø 22	Lubricate with grease Molykote PG54	86	1380520	Key	1		
28	880520	Ring	3	seal		87	1383140	Bearing	1		
40	2340260	Pump body	1			89	2340280	Support	1	open bearing	
41	1383440	Screw	8	TCEI M8x70	C=20Nm	90	2282261	Ring	1	seal	Assemble with tool [2281010]
43	880130	Oil plug	1	with oil dipstick		A	2514	Valve kit	1		
44	2340350	Plug	1	3/8" G	C=20Nm	B	2526	Piston kit	1	Ø 22	
45	740290	O-ring	1	Ø 14x1,78	Lubricate with grease Molykote PG54	C	2528	Oil seal kit	1		
46	1780510	O-ring	1	Ø 106x3		E	2527	Water seal kit	1	Ø 22 Viton	
47	2340250	Screw	6	TCEI M6x14	C=7Nm	G	1816	Support ring kit	1	Ø 22	
50	2340060	Nut	3	M8	C=10Nm / Loxeal 55-14						
51	2340200	Washer	3								
52	1383340	Piston	3	Ø 22	Lubricate with grease Molykote PG54						
53	480482	O-ring	3	Ø 4,48x1,78							
54	1080550	Ring	3	anti-extrusion							
55	2340190	Plate	3								
56	1383240	Piston	3	guide							
57	1380060	Pin	3								
58	1383020	Connecting-rod	3	bronze							
65	2349010	Cover	1	complete							
66	1260430	Ring	1								
67	1780690	Plate	1								

Revision: 1

Oil type: SAE 75W90

Validity: < XX/YY = From week/year

Date: 31/05/2024

Oil quantity: 0,415 Kg

C= Tightening torque (Tolerance +0 ÷ -10%)

* = Not present for electric pump