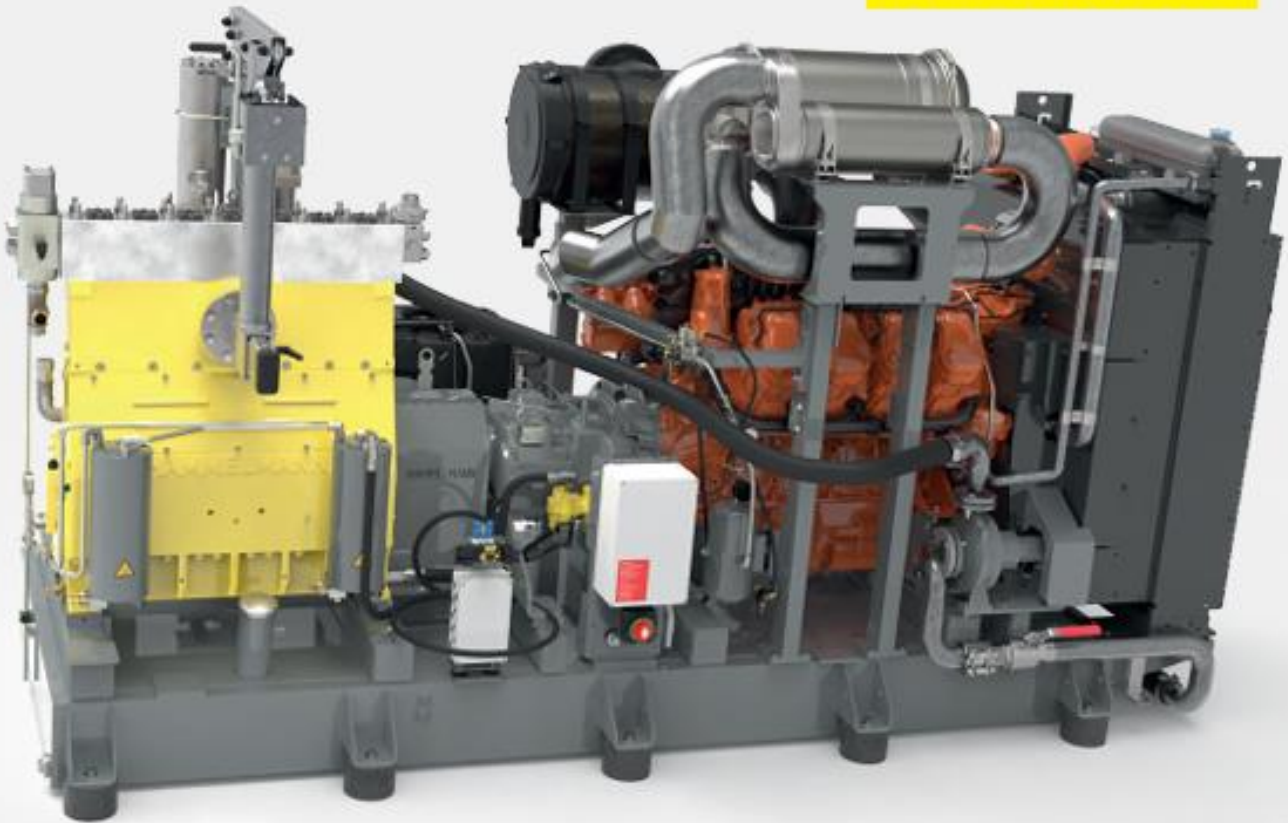


**HAMMELMANN®**



## **HDP 470**

# **THE NEW PUMP GENERATION**

Smooth-running 7-plunger design, modular and low-maintenance.

High energy savings

Full control

Great longevity

High mobility

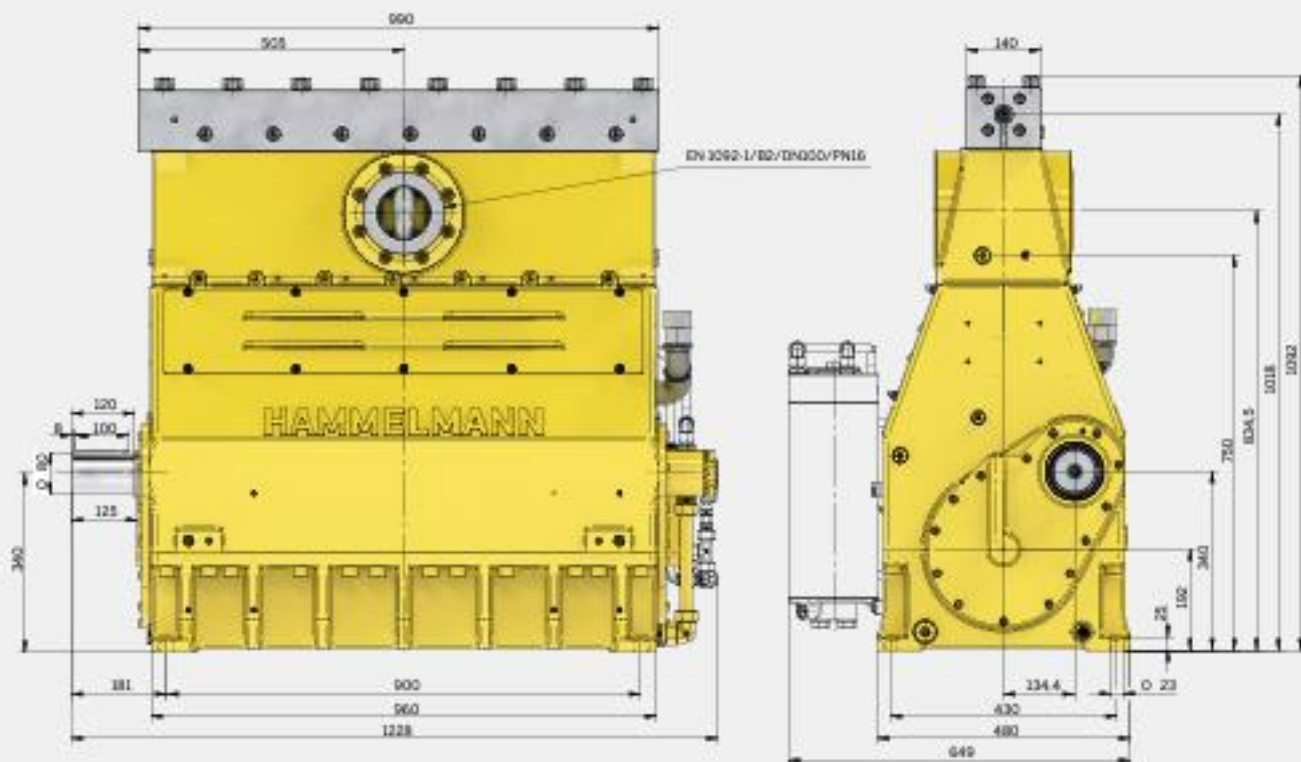
Many variants

Sturdy industrial engine

# HDP 470 PLUNGER PUMP

Hammelmann plunger pumps are designed for continuous operation. Refer to the crankshaft speed, average piston speed and drive power.

Plunger pump  
Weight: approx. 1620 kg



Dimensions: mm

## Stationary unit with diesel engine

Length: 3970 mm  
Width: 1640 mm  
Height: 2672 mm  
Weight: ca. 6500 kg at 470 kW



Main dimensions, without accessories such as suction lines, automatic pressure control, etc. Binding dimensional drawings and weights on request.

## Features

- Power ratings up to 470 kW
- Vertical 7 cylinder design

## Zero Emission



TA-Luft (Clean Air)  
certified to VDI 2440

In the Zero Emission design the pumped fluid is hermetically sealed within the pump preventing leakage to atmosphere during operation.



The bellow system is gastight.

## Quality and reliability

- Crank section calculation by 'Finite element method' ensures long working life under continuous load
- Stainless steel pump head free of alternating stress
- Integral speed reduction gear
- Pressurized oil lubrication system with oil cooler/filter
- Bellows form hermetic seal between the suction chamber and crank section
- High component similarity to existing pump series
- Minimum crankshaft speed with external oil pump 32 r.p.m.

## TECHNICAL DATA, SERIES HDP 470

Performance parameters (Standard design)

HDP	Q** [l/min]	Required power rating [kW]						D [mm]	r.p.m.							
		200	250	300	350	400	470		n1	n2						
		Operating pressure [bar]														
474	46	2200	2800	3200	-	-	-	17,5	1500	411						
	55	1830	2300	2800	3200	-	-		1500 / 1800	493						
	66	1530	1910	2300	2700	3100	3200		1800 / 2150	591						
	473	56	1810	2300	2700	3000	-	-	19,3	1500	411					
		67	1510	1880	2300	2600	3000	-		1500 / 1800	493					
		81	1260	1570	1880	2200	2500	3000		1800 / 2150	591					
		472	60	1680	2100	2500	2800	-	-	20	1500	411				
			72	1400	1750	2100	2500	2800	-		1500 / 1800	493				
			86	1170	1460	1750	2100	2300	2800	25	1800 / 2150	591				
101			1080	1350	1610	1800	-	-	1500		411					
121			900	1120	1350	1570	1800	-	1500 / 1800		493					
471	145	750	940	1120	1310	1500	1760	28	1800 / 2150	591						
	125	860	1070	1300	1430	-	-		1500	411						
	150	720	900	1070	1250	1430	-	1500 / 1800	493							
	180	600	750	900	1040	1200	1400	1800 / 2150	591							
	470	142	750	930	1120	1240	-	-	30	1500	411					
		170	620	780	930	1100	1240	-		1500 / 1800	493					
204		520	650	780	910	1040	1220	1800 / 2150		591						
475		177	620	770	930	1030	-	-	33	1500	411					
		213	510	640	770	900	1030	-		1500 / 1800	493					
		255	430	540	640	750	860	1010		1800 / 2150	591					
		476	195	550	700	820	910	-	-	35	1500	411				
			234	460	570	700	800	910	-		1500 / 1800	493				
			281	380	480	570	670	760	900		1800 / 2150	591				
			477	258	420	530	630	700	-	-	40	1500	411			
				309	350	440	530	610	700	-		1500 / 1800	493			
				370	300	370	440	510	580	700		1800 / 2150	591			
				478	329	330	420	500	550	-	-	45	1500	411		
					395	280	350	420	480	550	-		1500 / 1800	493		
					474	230	300	350	400	460	540		1800 / 2150	591		
					479	411	270	340	400	450	-	-	50	1500	411	
						493	220	280	340	400	450	-		1500 / 1800	493	
						591	200	230	280	330	370	440		1800 / 2150	591	
		480				497	220	280	330	370	-	-	55	1500	411	
						596	200	230	280	320	370	-		1500 / 1800	493	
						715	150	200	230	270	310	360		1800 / 2150	591	
						481	586	200	230	280	310	-	-	60	1500	411
							703	160	200	230	270	310	-		1500 / 1800	493
							842	130	160	200	230	260	310		1800 / 2150	591
				482			687	160	200	240	270	-	-	65	1500	411
							825	130	170	200	230	270	-		1500 / 1800	493
							988	110	140	170	200	220	260		1800 / 2150	591
			483		797		140	170	210	230	-	-	70	1500	411	
					956		110	140	170	200	230	-		1500 / 1800	493	
					1146		100	120	140	170	200	220		1800 / 2150	591	
		484			1041		110	130	160	180	-	-	80	1500	411	
					1249		100	110	130	150	180	-		1500 / 1800	493	
					1497		70	100	110	130	150	170		1800 / 2150	591	

### Data

- Rod force: 88 kN
- Stroke: 75 mm
- Mean plunger speed at n2  
400 l/min. = 1,00 m/sec  
493 l/min. = 1,23 m/sec  
591 l/min. = 1,48 m/sec

### Certificates

- Machine directive  
2006/42/EU
- ATEX 94/9/EU
- API 674 (with deviations)
- TA-Luft
- NORSOK M501
- NORSOK M650
- NACE MR0175

### Standards

- DIN EN ISO 9001
- DIN EN ISO 14001
- DIN EN ISO 50001
- BS OHSAS 18001
- ASME-U
- EAC

\*\* Data refer to the medium water  
(compressibility considered)

D = Plunger diameter  
n1 = Motor/Engine r.p.m.  
n2 = Crankshaft r.p.m.

ENERGY  
EFFICIENT



Hammelmann plunger pumps convert 93 to 98 %  
of the shaft power to hydraulic energy.